

OROLEVE DITCH PIPE REPLACEMENT PROJECT

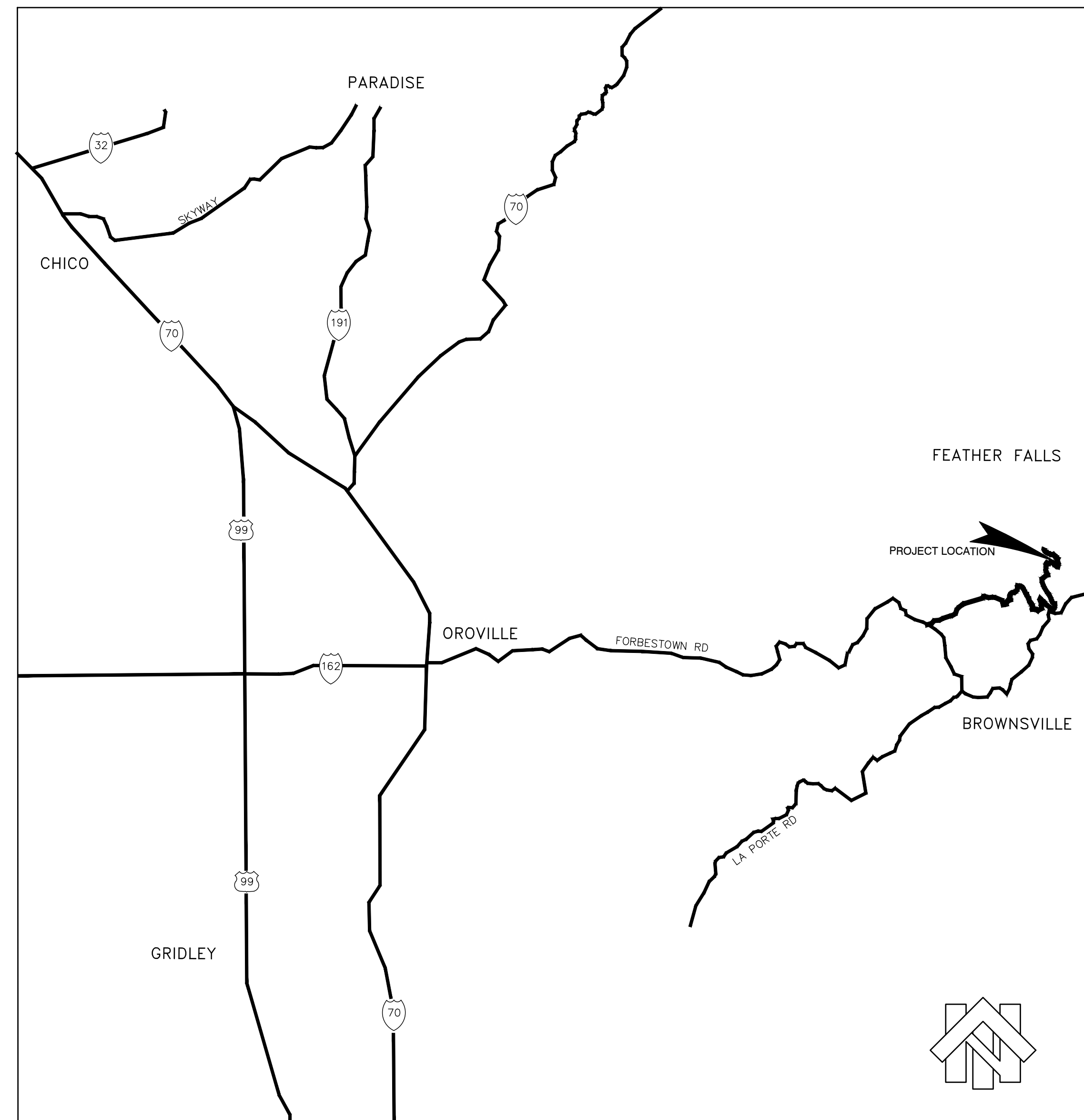
NORTH YUBA WATER DISTRICT
MARCH, 2020

ABBREVIATIONS

ADVANCE DRAINAGE SYSTEM, INC	ADS
AGGREGATE BASE	AB
ASPHALT CONCRETE	AC
BOTTOM	BOT
CLEARANCE	CLR
CORRUGATED METAL PIPE	CMP
DRIVEWAY	DW
EXISTING	EX
EDGE OF TRAVELED WAY	ETW
FINISH GRADE	FG
FLOWLINE	FL
GRADE BREAK	GB
GRAVEL	GRVL
HIGH DENSITY POLYETHYLENE	HDPE
HOT MIXED ASPHALT	HMA
INVERT	INV
MAXIMUM	MAX
MINIMUM	MIN
ON CENTER	O.C.
ORIGINAL GRADE	OG
PROPOSED	P
REINFORCED CONCRETE PIPE	RCP
RIGHT OF WAY	ROW
STANDARD	STD
TYPICAL	TYP
UNLESS OTHERWISE NOTED	U.O.N.

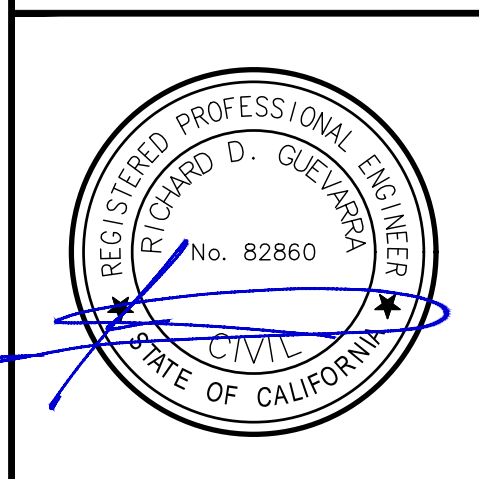
LEGEND

---	PROPERTY LINE (FOR REFERENCE ONLY)
---	CENTERLINE (FOR STATIONING ONLY)
---	EXISTING EDGE OF ROADWAY / PAVEMENT
== 24" SD ==	EXISTING CMP/CULVERT
---	EXISTING FLOW LINE
---	EXISTING TOE
---	EXISTING TOP
---	EXISTING CONCRETE
•	PROPOSED HDPE ELBOW FITTING
■	PROPOSED PIPE FLOW TURN OUT STRUCTURE (SEE DETAIL E/SHEET 6 FOR INFORMATION)
⊙	PROPOSED 36" PIPE ACCESS PORT (SEE DETAIL F/SHEET 6 FOR INFORMATION)
---	PROPOSED HDPE PIPE (SEE DETAIL A & B/SHEET 6 FOR INFORMATION)
△	CONTROL POINT
★	PROPOSED SHEET FLOW DRAINAGE (SEE DETAIL C/SHEET 6 FOR INFORMATION)
★	PROPOSED STAGING AREA
---	EXISTING ROAD (APPROXIMATE LOCATION)



LOCATION MAP (NTS)

SHEET INDEX	
SHEET NO.	SHEET TITLE
1	TITLE SHEET
2	CONTROL PLAN - STA. 597+00 TO STA. 636+00
3	PLAN AND PROFILE (OROLEVE) - STA. 597+00 TO STA. 610+00
4	PLAN AND PROFILE (OROLEVE) - STA. 610+00 TO STA. 623+00
5	PLAN AND PROFILE (OROLEVE) - STA. 623+00 TO STA. 636+00
6	DETAILS SHEET



3/24/2020

Designed	Revision	Date	By
RDG			
Drawn By: RDG			
Approved:			
Date: MARCH 2020			



NORTH YUBA WATER DISTRICT
8691 LA PORTE ROAD
BROWNSVILLE, CA 95919

OROLEVE DITCH PIPE REPLACEMENT PROJECT				
TITLE SHEET				
APN Number 000-000-000	Job Number 17-002	Scale N/A Horz.	N/A Vert.	Sheet 1 Of 6

BASIS OF COORDINATES:

THE COORDINATES SHOWN HEREON ARE BASED UPON THE CALIFORNIA COORDINATES SYSTEM OF 1983, CCS83, ZONE 2 (2011.00)(EPOCH 2010.0000). SAID COORDINATES ARE BASED UPON POST PROCESSED GPS SURVEYS WITH TIES TO THE FOLLOWING CALIFORNIA SPATIAL REFERENCE NETWORK, CONTINUOUSLY OPERATING REFERENCE STATIONS (CORS):

REFERENCED NGS CORS STATIONS:

CORS STATIONS	NORTHING	EASTING	NAVD88 ELEVATION
PID:DM7533 DESIGNATION: P140 SLATEMTN_CN2006 CORS ARP	2,066,487.56	6,933,924.08	3,629.5
PID: DN7521 DESIGNATION: P146 SIGNALPEAKCN2006 CORS ARP	2,252,236.41	6,975,349.15	7,780.2
PID: DN7524 DESIGNATION: P148 GOATMTN_CN2006 CORS ARP	2,038,034.19	6,894,108.17	5,275.4
PID: P149 DESIGNATION: DN5642 BABBITPK_CN2008 CORS ARP	2,350,873.66	7,095,592.77	8,722.5
PID: DM7545 DESIGNATION P270 HOPKINSLGHGN2005 CORS ARP	2,214,787.53	6,546,034.18	58.1
PID: DN5654 DESIGNATION P344 VINAHELITKCN2006 CORS ARP	1,857,466.21	6,553,826.01	256.5
PID: DN7395 DESIGNATION: P346 BUZZARDRSTCN2007 CORS ARP	1,810,556.12	6,879,923.33	6,763.0
PID: AF9711 DESIGNATION: SUTB SUTTER BUTTES CORS ARP	2,201,017.20	6,612,505.47	2,119.3
PID: AF9564 DESIGNATION: QUIN QUINCY CORS ARP	1,875,796.84	6,857,507.43	3,708.1
PID: DE6254 DESIGNATION: RN01 NW RENO COOP CORS ARP	14,869,133.90	2,257,346.42	5,101.8
PID: DE6260 DESIGNATION STEA STEAD COOP CORS ARP	14,901,045.67	2,258,412.07	5,113.4

(NEVADA COORDINATE SYSTEM OF 1983, WEST ZONE (2011.00), EPOCH 2010.0000)

(NEVADA COORDINATE SYSTEM OF 1983, WEST ZONE (2011.00), EPOCH 2010.0000)

NORTHSTAR CONTROL POINTS:

POINT NUMBER	NORTHING	EASTING	NAVD88 ELEVATION	DESCRIPTION	COMBINED SCALE FACTOR	CONVERGANCE ANGLE
201	2327891.655	6788861.086	3150.42	CTL REBAR	0.99980149	0°30'29"
202	2322968.271	6788672.580	3144.98	CTL REBAR	0.99979986	0°30'27"
17002	2327543.889	6788860.854	3128.91	CTL REBAR AND CAP	0.99980209	0°30'29"

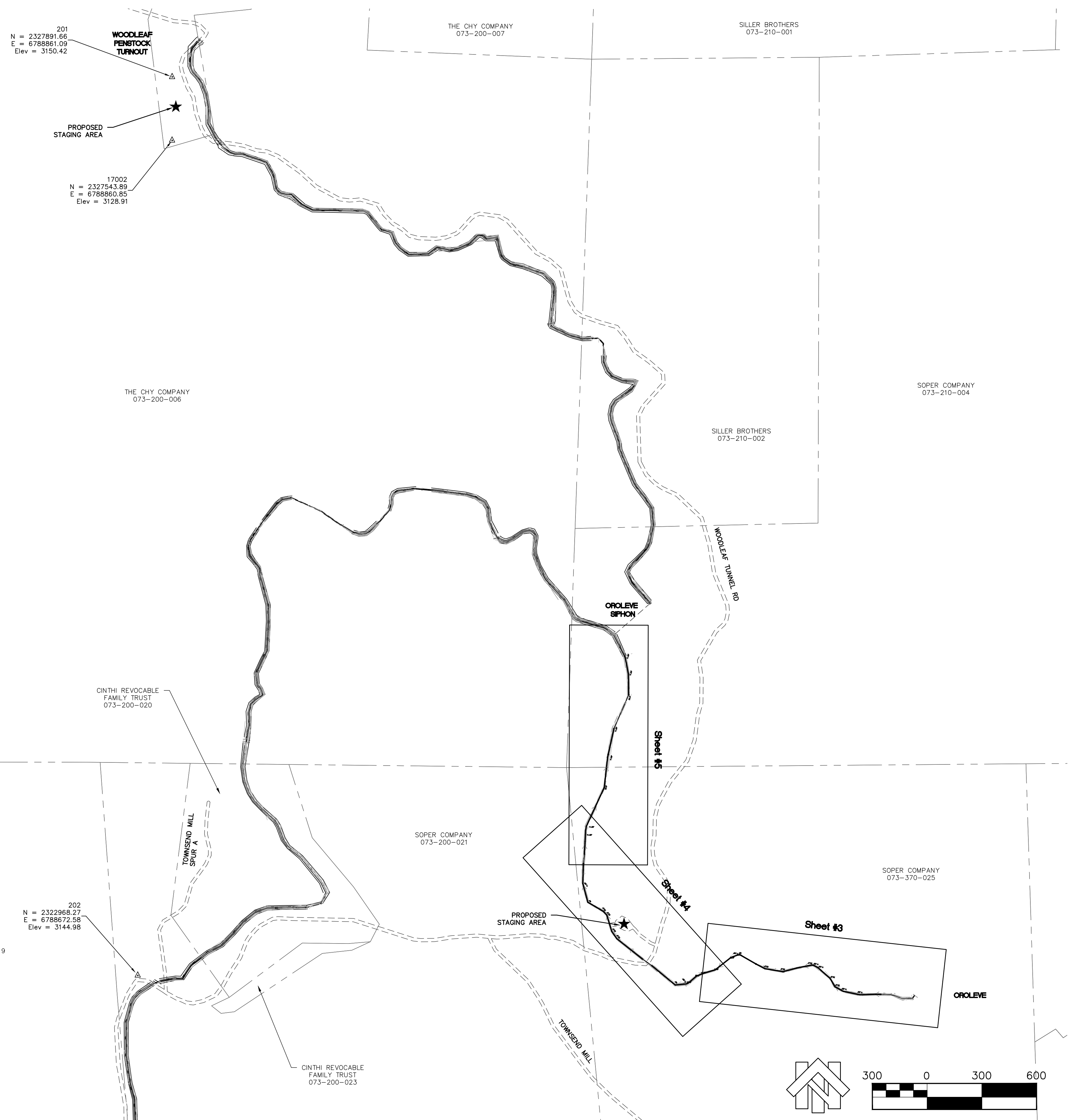
ALL COORDINATES SHOWN ARE GRID AND ARE IN TERMS OF US SURVEY FEET.

GENERAL SURVEY NOTES

- THIS IS NOT A BOUNDARY SURVEY. PROPERTY LINES SHOWN ON THE PLANS WERE DERIVED FROM BUTTE COUNTY AND YUBA COUNTY GIS MAP AND SHALL BE FOR REFERENCE ONLY. NO LIABILITY IS ASSUMED BY NORTHSTAR ENGINEERING FOR THE EXISTENCE OF ANY EASEMENTS, ENCUMBRANCES AND DISCREPANCIES IN BOUNDARY OR TITLE DEFECTS.
- PHYSICAL ITEMS SHOWN ON THIS TOPOGRAPHIC SURVEY ARE LIMITED TO THOSE ITEMS VISIBLE BY SURFACE INSPECTION AS OF THE DATE OF THIS SURVEY. SUBSURFACE STRUCTURES, IF ANY, ARE NOT SHOWN.
- THE TYPES, LOCATIONS, SIZES AND/OR DEPTHS OF EXISTING UNDERGROUND UTILITIES AS SHOWN ON THIS TOPOGRAPHIC SURVEY WERE OBTAINED FROM SURFACE FEATURES AND SOURCES OF VARYING RELIABILITY. ONLY ACTUAL EXCAVATION WILL REVEAL THE TYPES, EXTENT, SIZES, LOCATIONS AND DEPTHS OF SUCH UNDERGROUND UTILITIES. NORTHSTAR ENGINEERING ASSUMES NO RESPONSIBILITY FOR THE COMPLETENESS OR ACCURACY OF THE DELINEATION OF SUCH UNDERGROUND UTILITIES WHICH MAY BE ENCOUNTERED.
- VERTICAL DATUM: ELEVATIONS ARE BASED UPON THE NORTH AMERICAN VERTICAL DATUM OF 1988 (NAVD88) ORTHOMETRIC HEIGHTS AS ESTABLISHED LOCALLY BY POST-PROCESSED GPS OBSERVATIONS UTILIZING GEOID 12B.

LEGEND

▲ NORTHSTAR CONTROL POINT



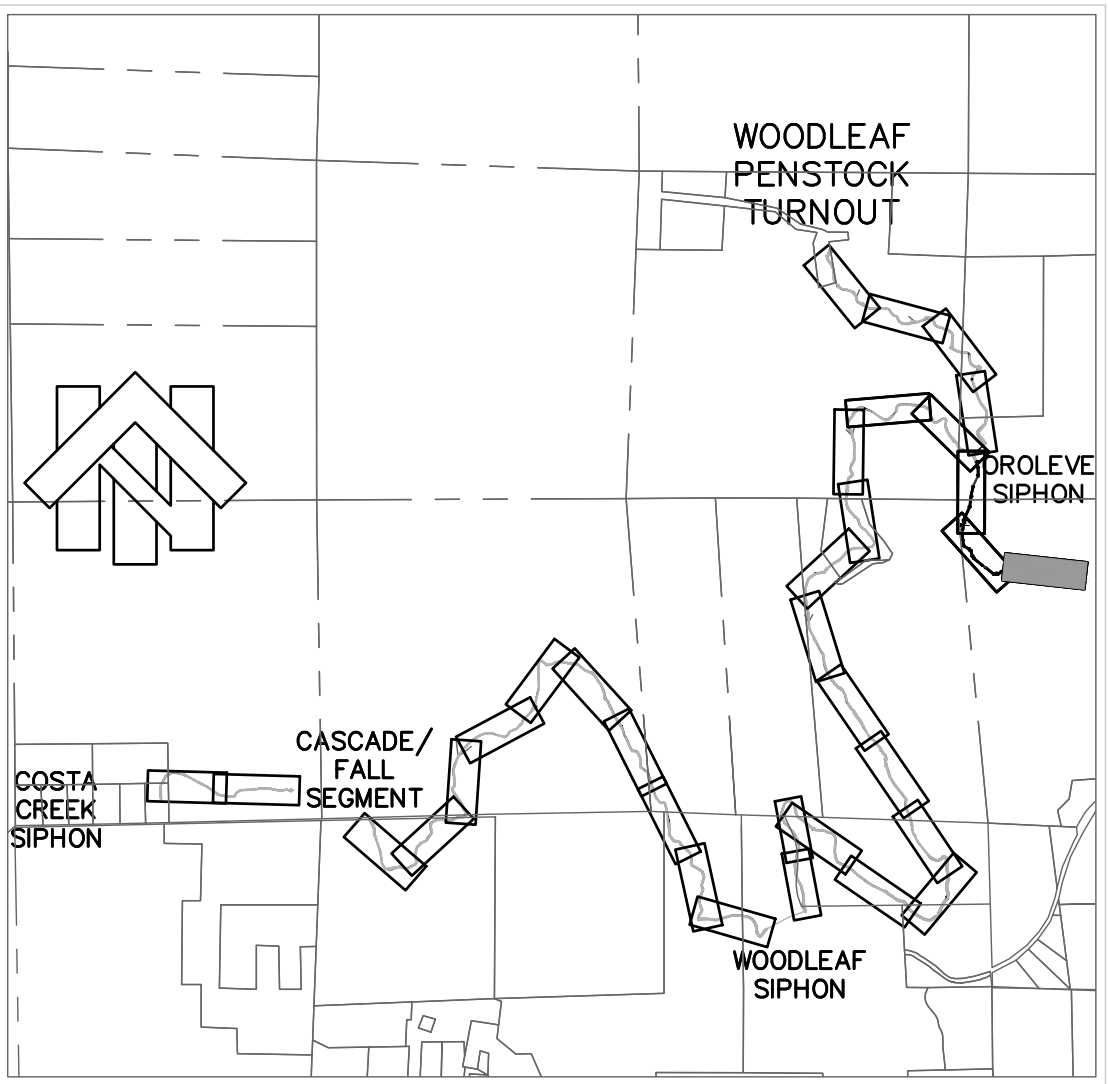
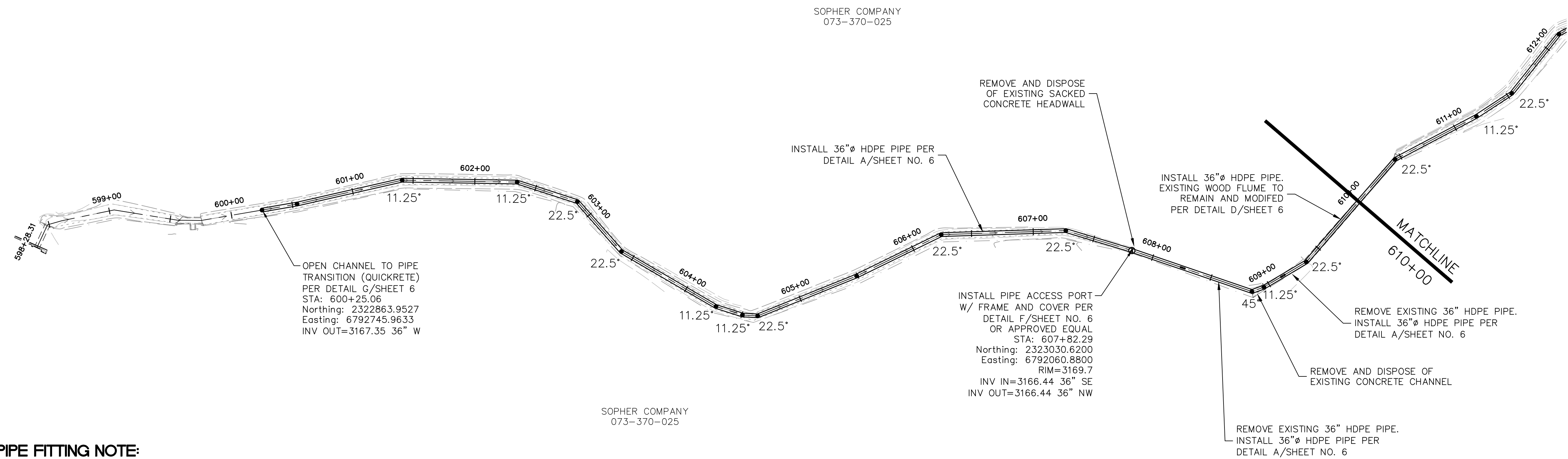
3/24/2020

Designed:	Revision	Date	By
RDG			
Drawn By:			
RDG			
Approved:			
Date:			
MARCH 2020			

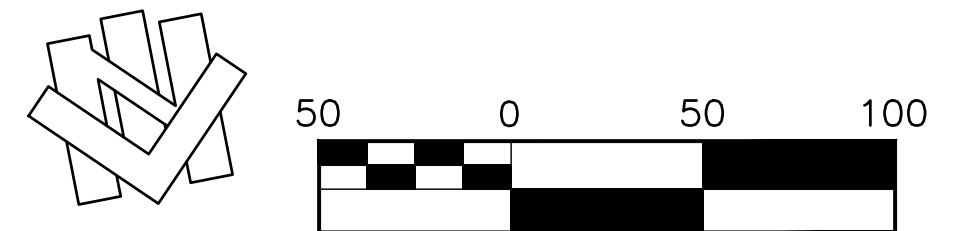


NORTH YUBA WATER DISTRICT
 8691 LA PORTE ROAD
 BROWNSVILLE, CA 95919

OROLEVE DITCH PIPE REPLACEMENT PROJECT				
CONTROL PLAN - STA.597+00 TO STA. 636+00				
APN Number 000-000-000	Job Number 17-002	N/A Scale Horz.	N/A Scale Vert.	Sheet 2 Of 6

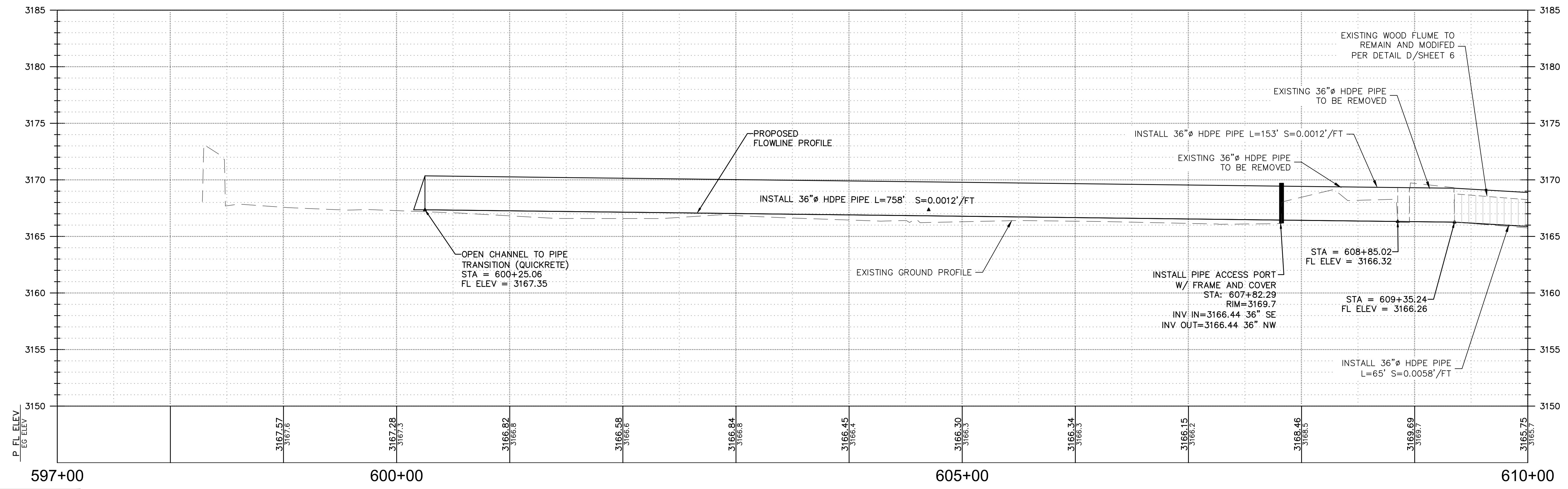


KEY MAP
NOT TO SCALE



PIPE FITTING NOTE:

LOCATIONS AND BEND ANGLES SHOWN ON THE PLANS ARE APPROXIMATE. EXACT LOCATIONS AND BEND ANGLES REQUIRED FOR THE PROJECT SHALL BE DETERMINED BY THE CONTRACTOR IN THE FIELD PRIOR TO ORDERING MATERIALS.

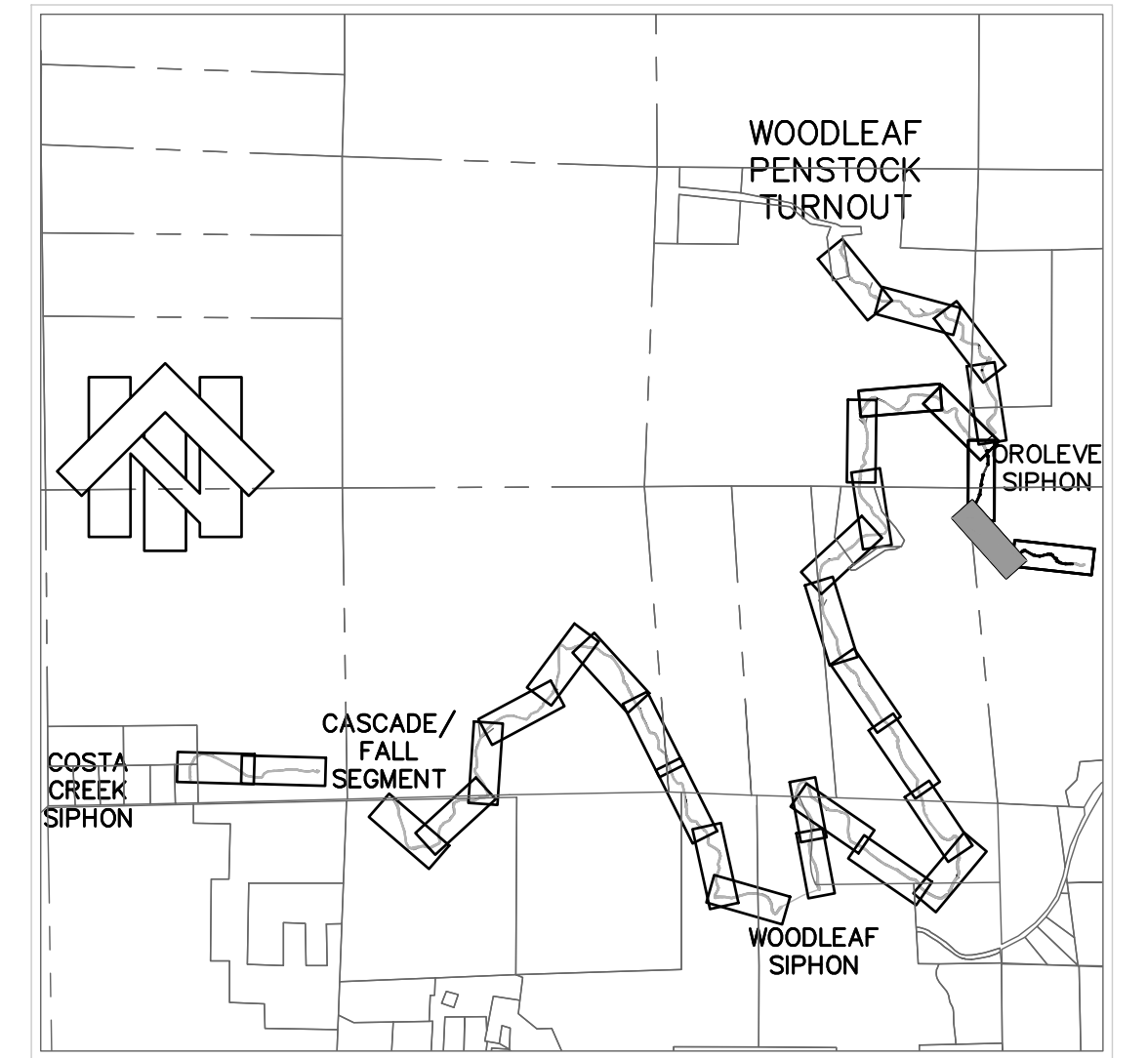
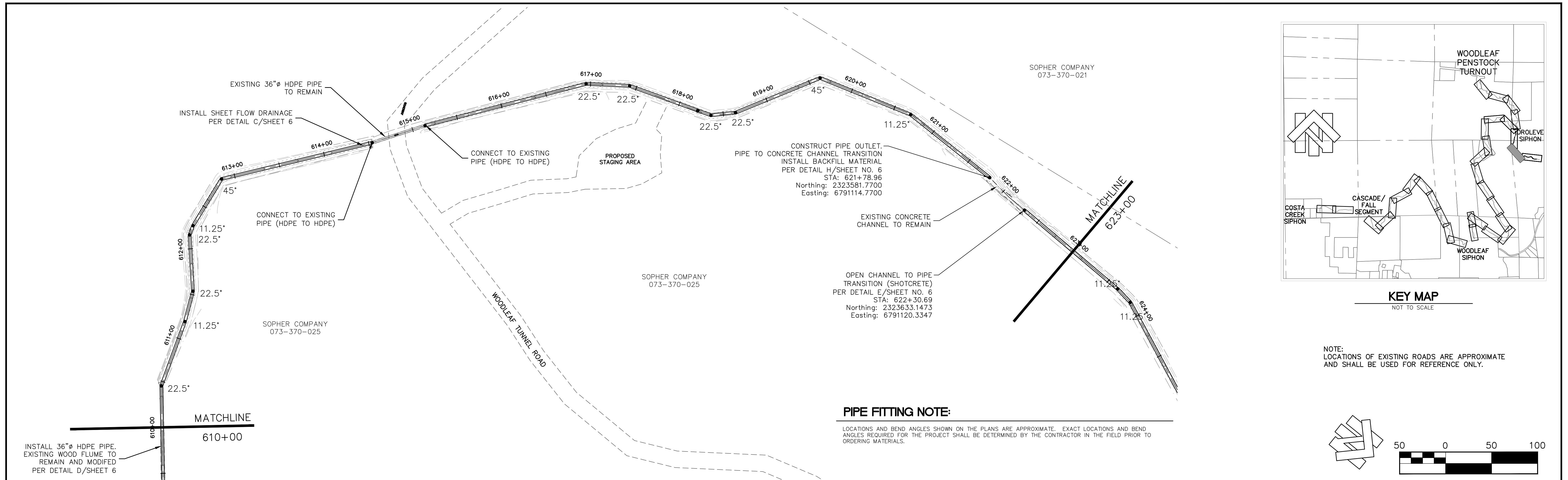


3/24/2020	Designed:	RDG	Revision	Date	By
	Drawn By:	RDG			
	Approved:				
	Date:	MARCH 2020			



NORTH YUBA WATER DISTRICT
8691 LA PORTE ROAD
BROWNSVILLE, CA 95919

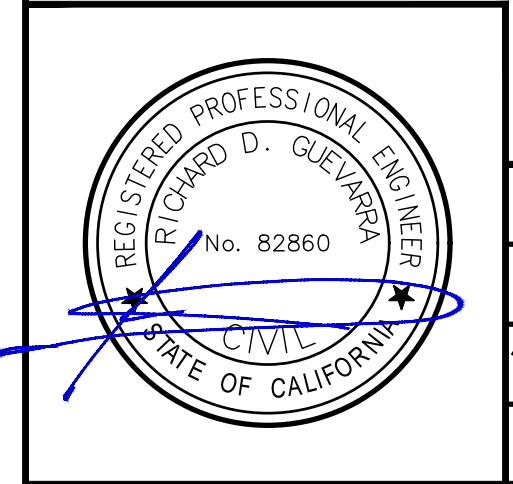
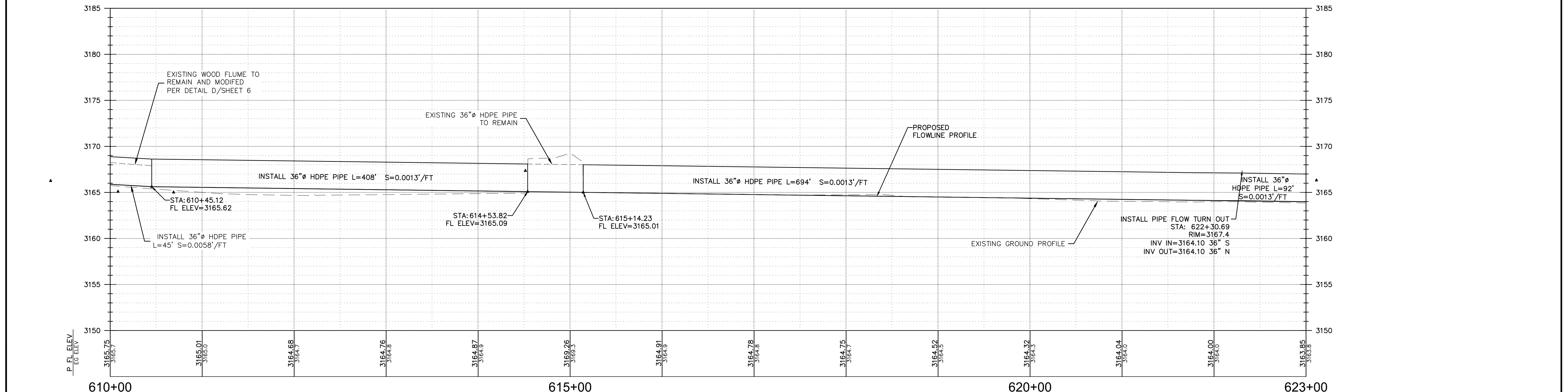
OROLEVE DITCH PIPE REPLACEMENT PROJECT				
PLAN AND PROFILE (OROLEVE) - STA. 597+00 TO STA. 610+00				
APN Number 000-000-000	Job Number 17-002	N/A Scale Horz.	N/A Scale Vert.	Sheet 3 Of 6



NOTE:
LOCATIONS OF EXISTING ROADS ARE APPROXIMATE
AND SHALL BE USED FOR REFERENCE ONLY.



PIPE FITTING NOTE:
LOCATIONS AND BEND ANGLES SHOWN ON THE PLANS ARE APPROXIMATE. EXACT LOCATIONS AND BEND ANGLES REQUIRED FOR THE PROJECT SHALL BE DETERMINED BY THE CONTRACTOR IN THE FIELD PRIOR TO ORDERING MATERIALS.

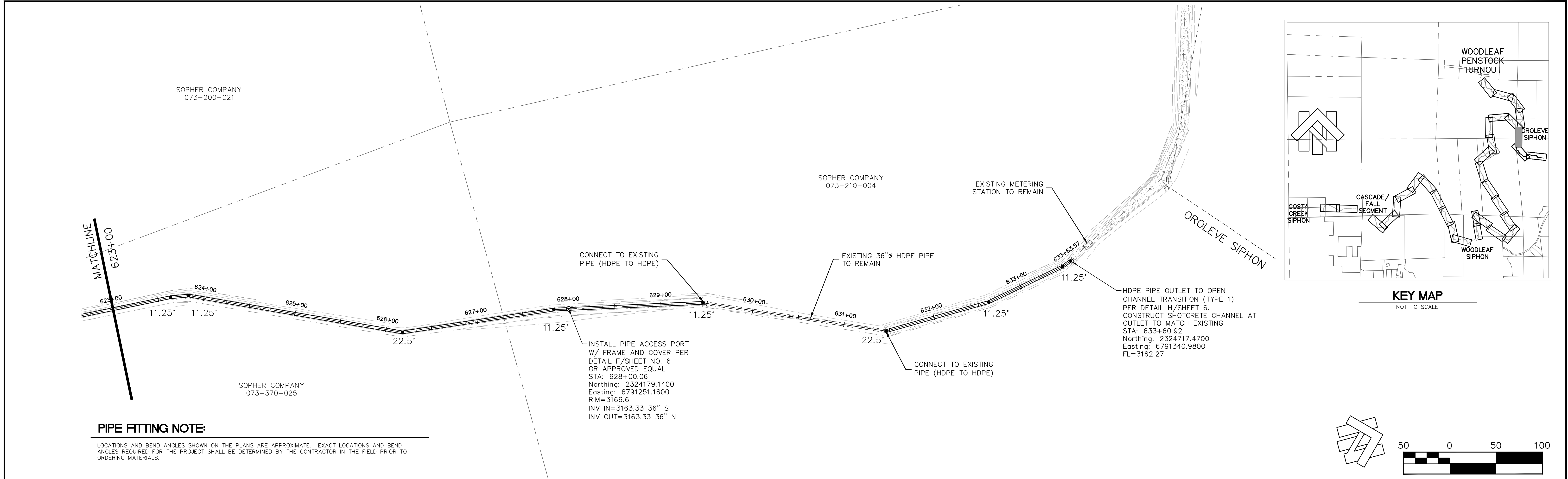


3/24/2020	Designed:	RDG	Revision	Date	By
	Drawn By:	RDG			
	Approved:				
	Date:	MARCH 2020			



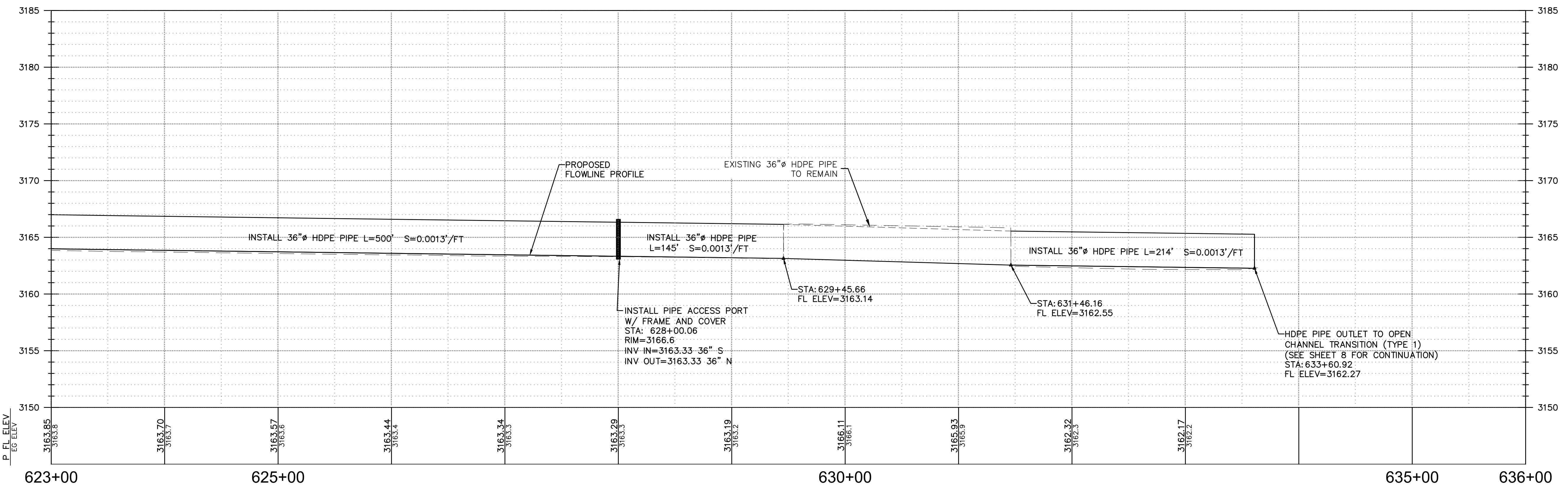
NORTH YUBA WATER DISTRICT
8691 LA PORTE ROAD
BROWNSVILLE, CA 95919

OROLEVE DITCH PIPE REPLACEMENT PROJECT				
PLAN AND PROFILE (OROLEVE) - STA. 610+00 TO STA. 623+00				
APN Number 000-000-000	Job Number 17-002	N/A Scale Horz.	N/A Scale Vert.	Sheet 4 Of 6



PIPE FITTING NOTE:

LOCATIONS AND BEND ANGLES SHOWN ON THE PLANS ARE APPROXIMATE. EXACT LOCATIONS AND BEND ANGLES REQUIRED FOR THE PROJECT SHALL BE DETERMINED BY THE CONTRACTOR IN THE FIELD PRIOR TO ORDERING MATERIALS.

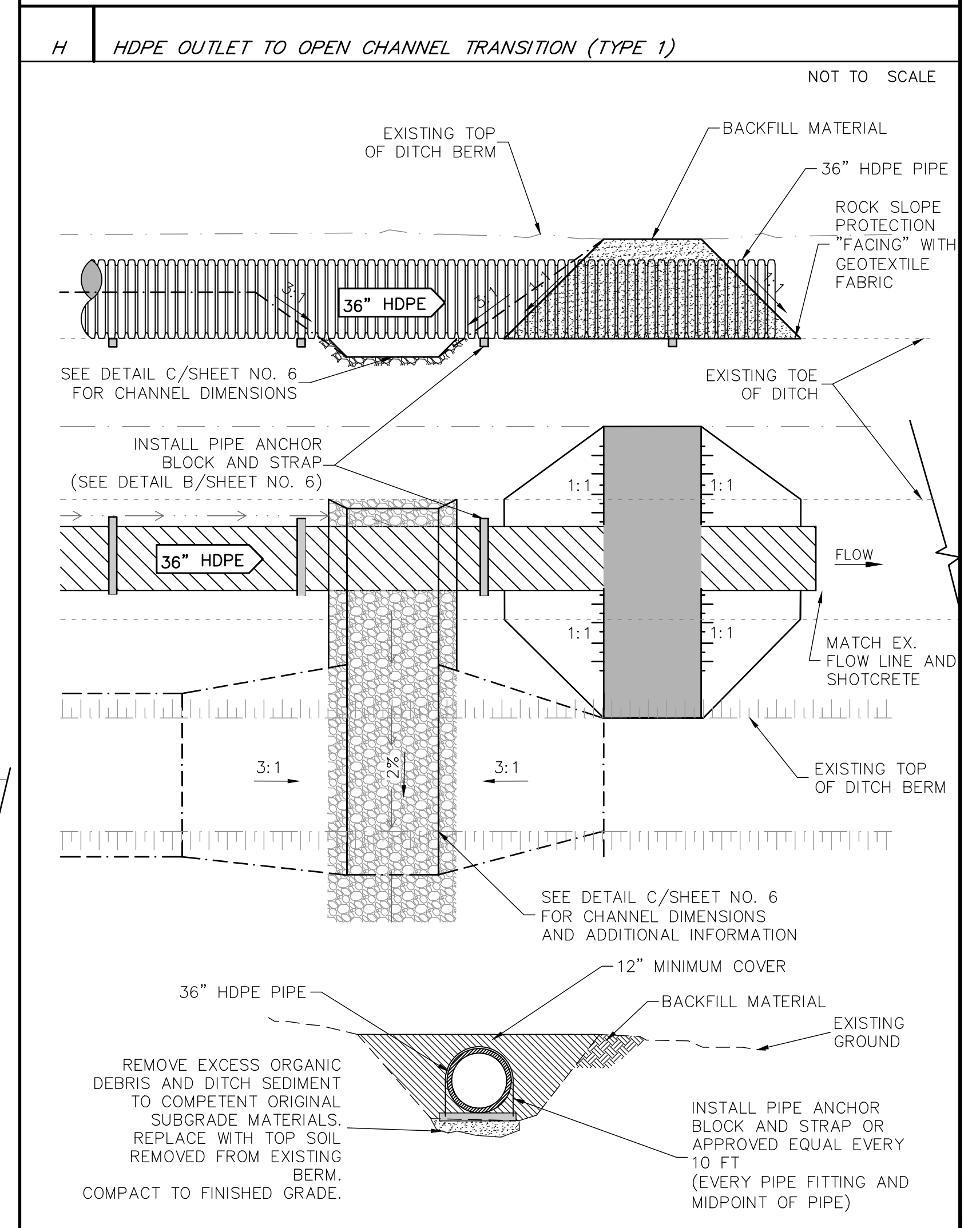
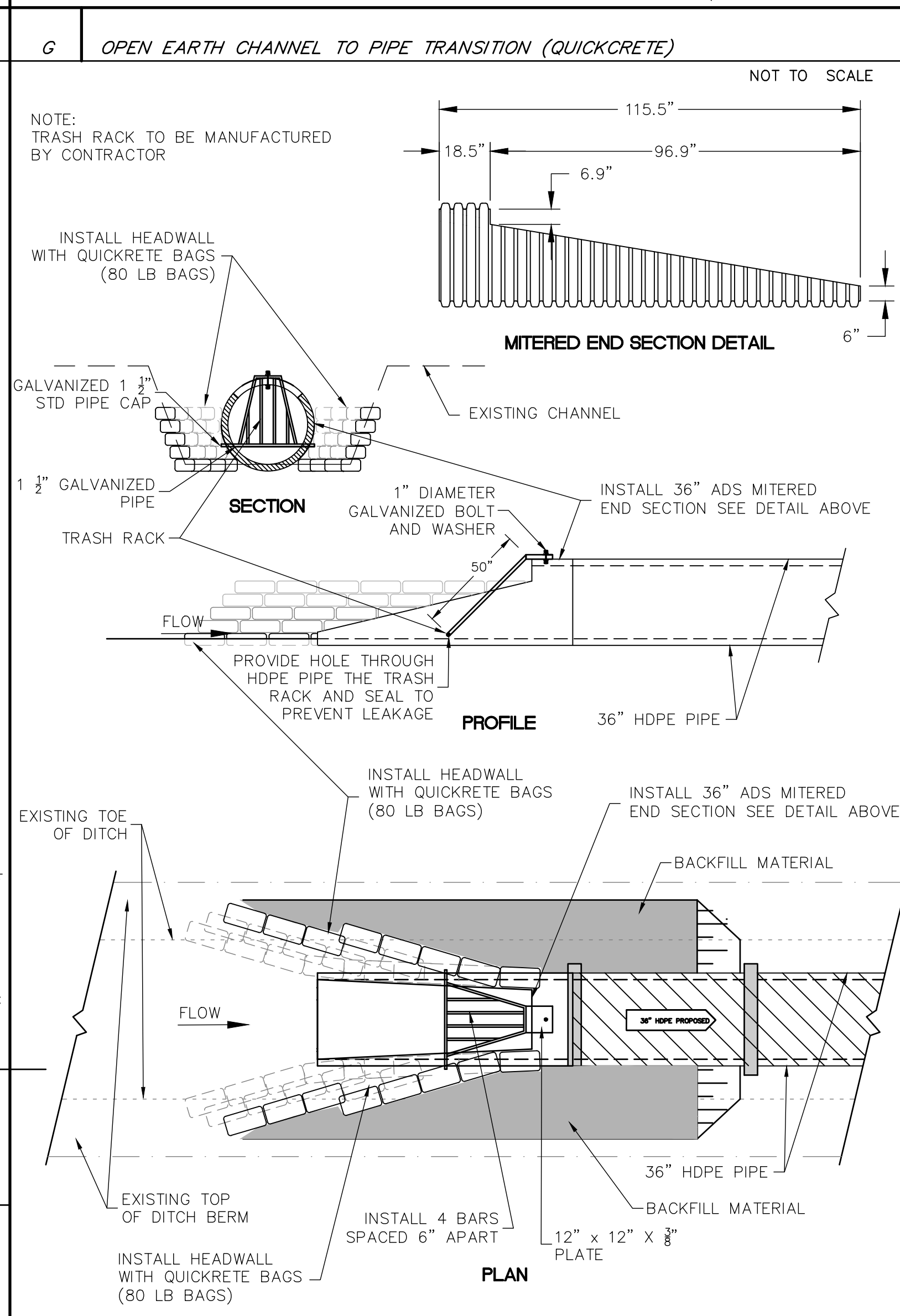
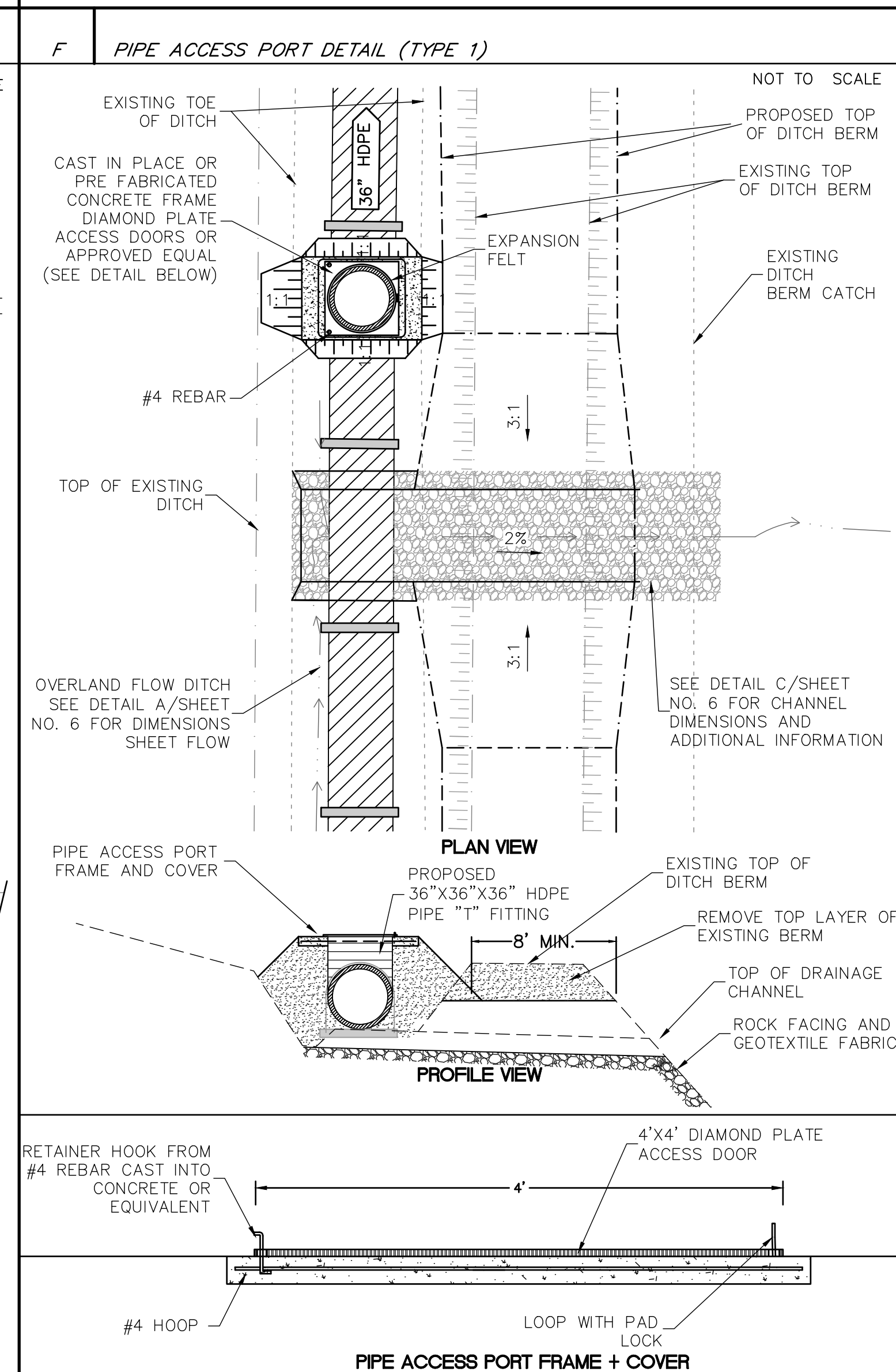
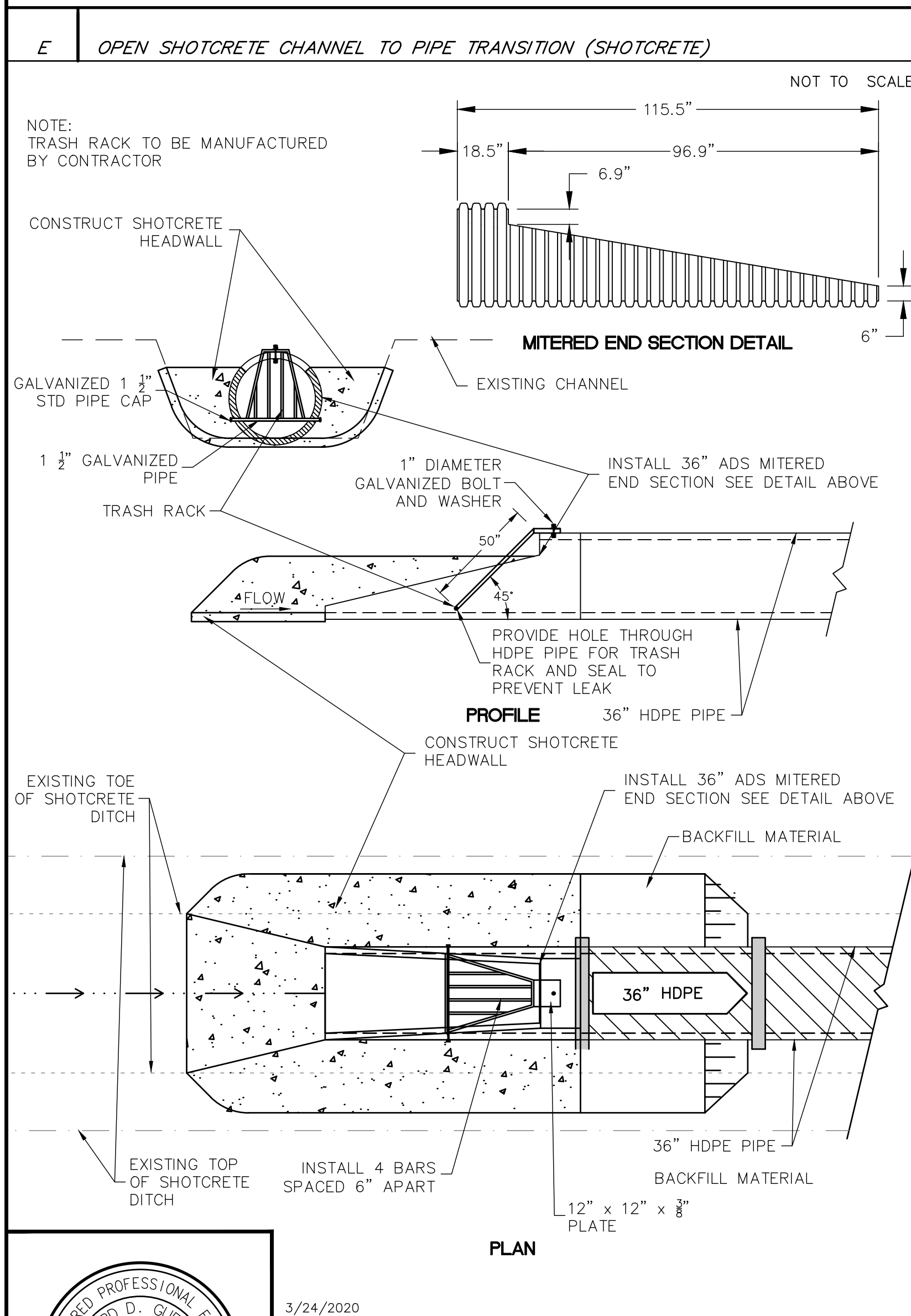
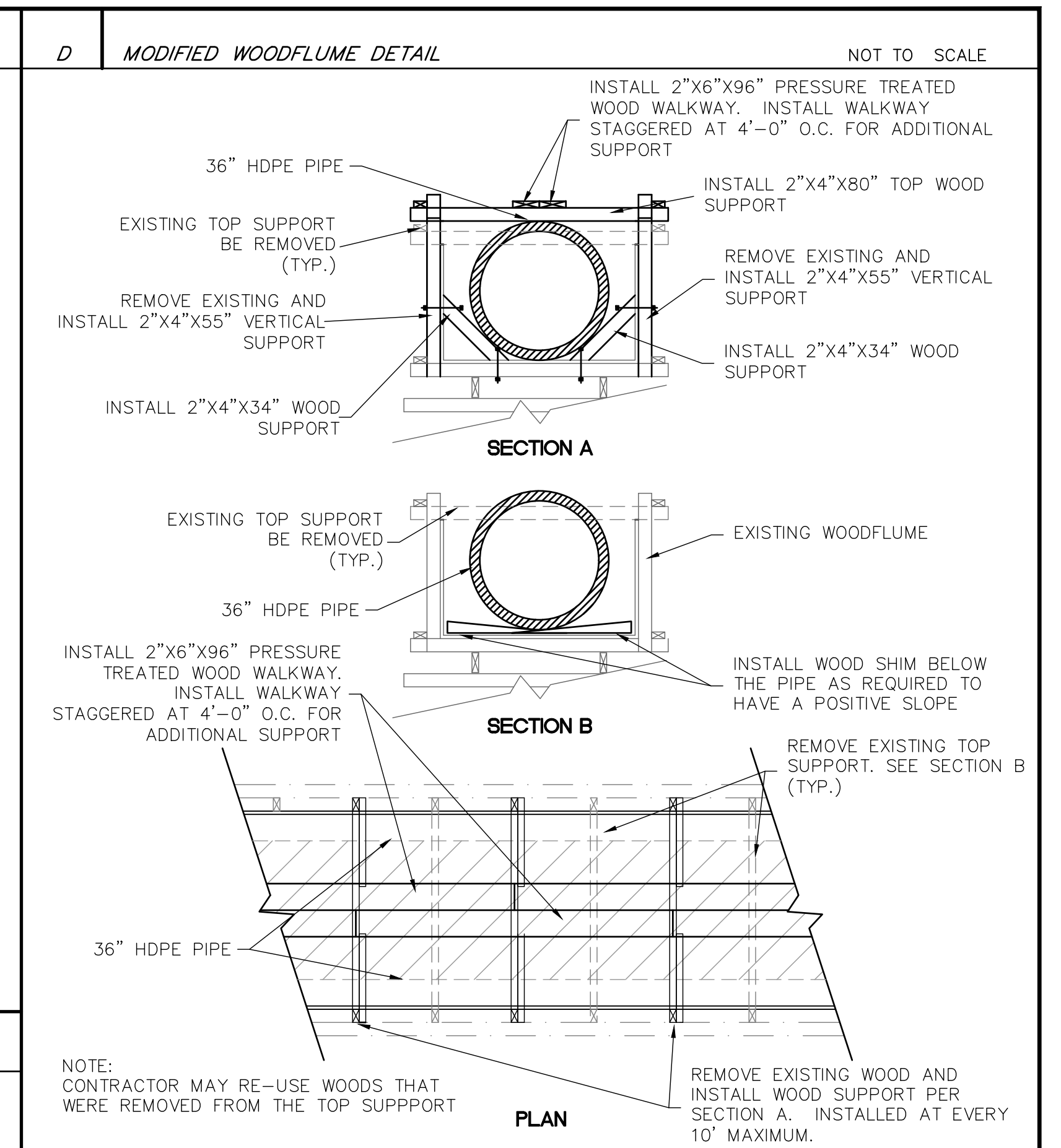
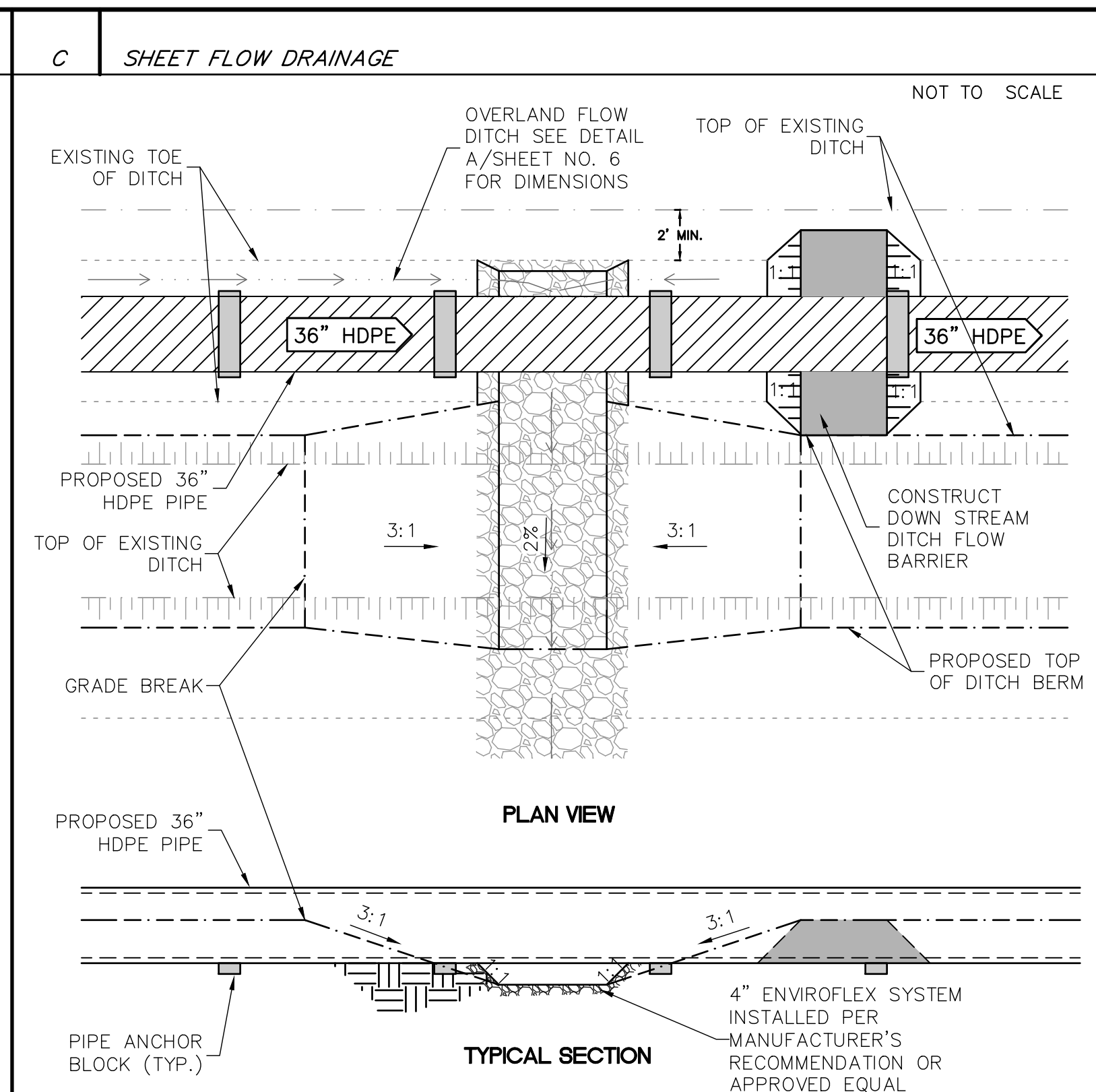
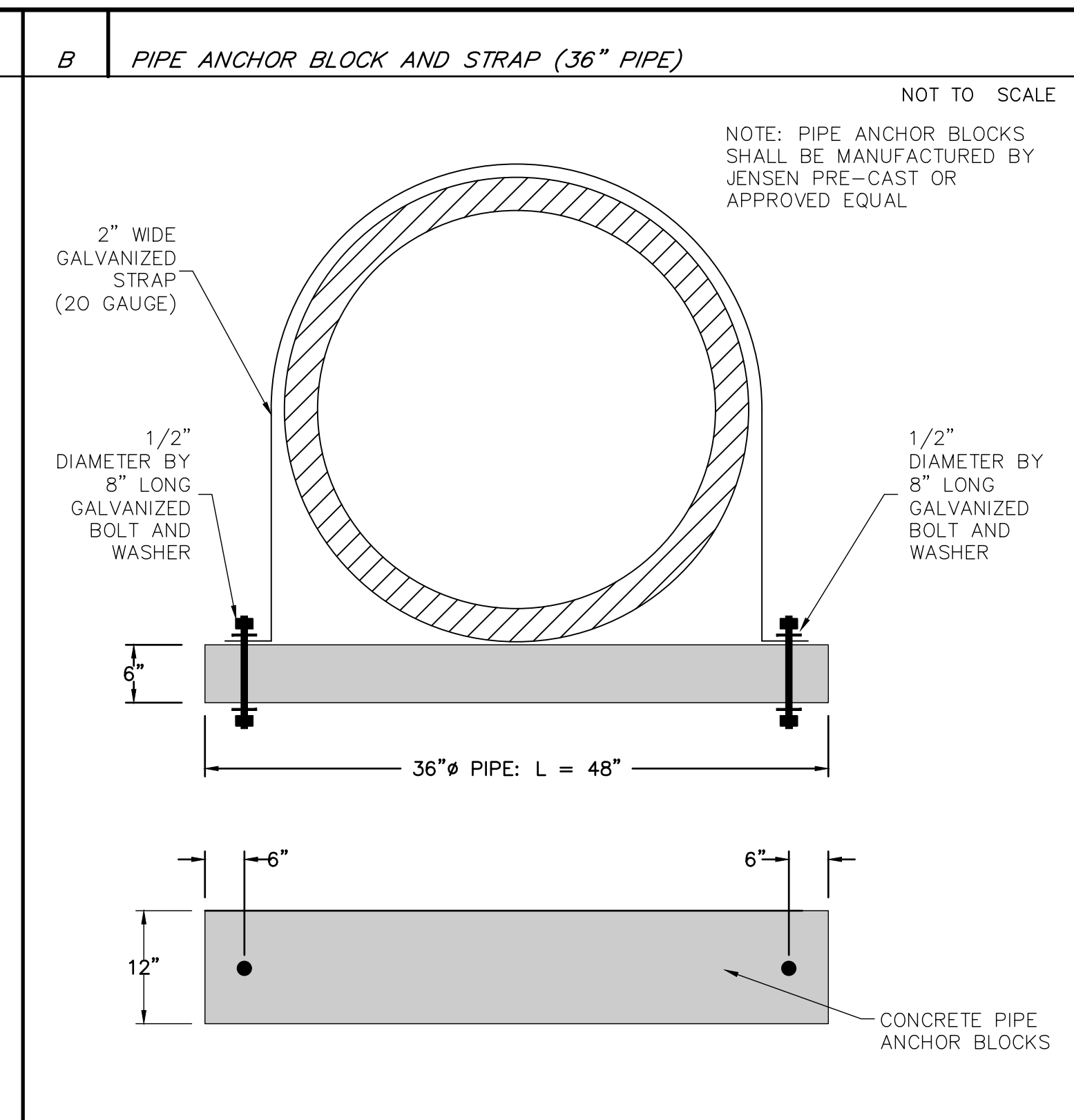
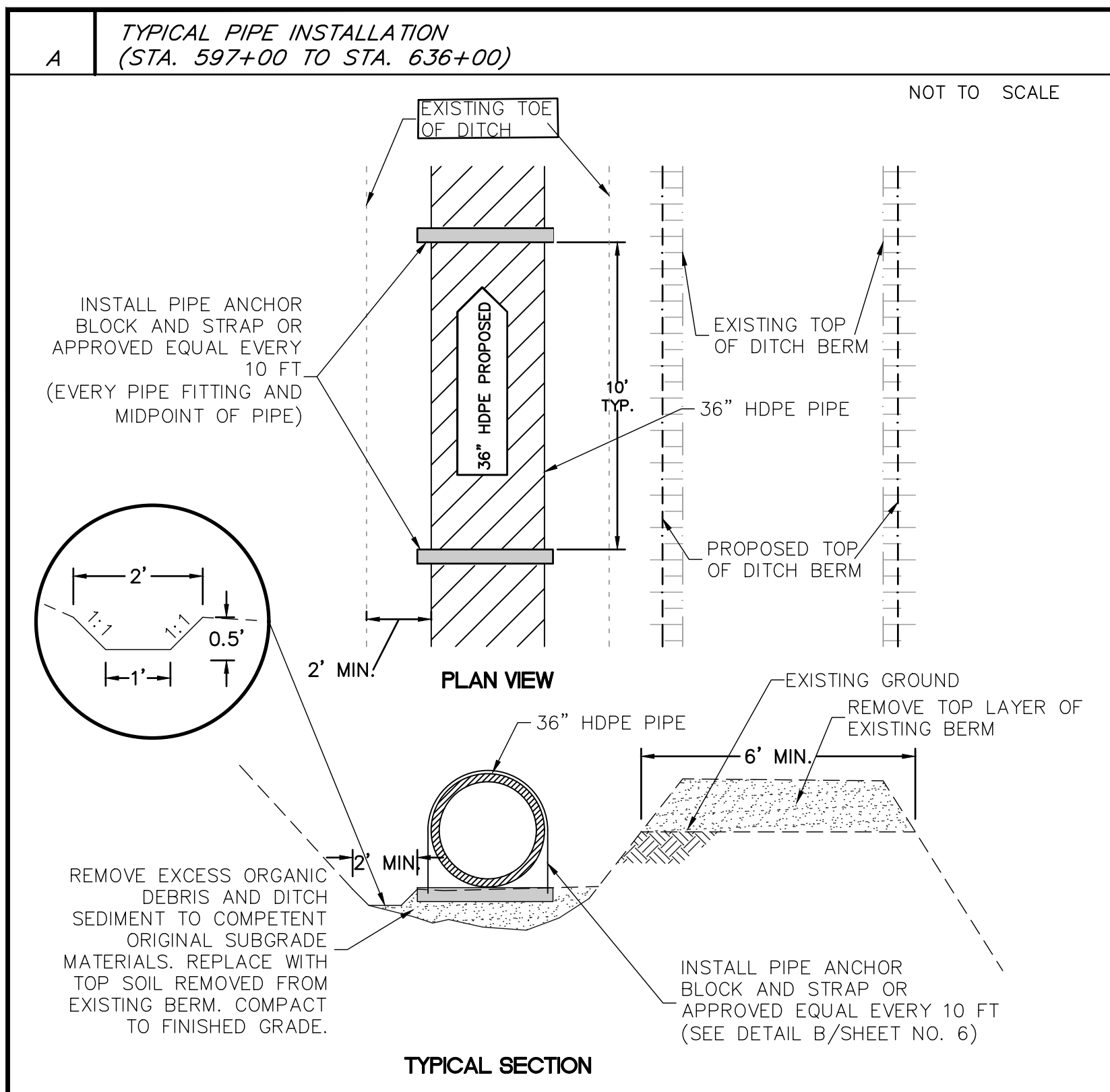


3/24/2020				
Designed:	RDG	Revision	Date	By
Drawn By:	RDG			
Approved:				
Date:	MARCH 2020			



NORTH YUBA WATER DISTRICT
 8691 LA PORTE ROAD
 BROWNSVILLE, CA 95919

OROLEVE DITCH PIPE REPLACEMENT PROJECT				
PLAN AND PROFILE (OROLEVE) - STA. 623+00 TO STA. 636+00				
APN Number 000-000-000	Job Number 17-002	N/A Scale Horz.	N/A Scale Vert.	Sheet 5 Of 6



3/24/2020

Designed:	RDG	Revision		Date		By	
Drawn By:	RDG						
Approved:							
Date:	MARCH 2020						

NORTHSTAR
... Designing Solutions

111 MISSION RANCH BLVD, SUITE 100, CHICO, CA 95926
PHONE: (530) 893-1600 www.northstareng.com

NORTH YUBA WATER DISTRICT
8691 LA PORTE ROAD
BROWNSVILLE, CA 95919

OROLEVE DITCH PIPE REPLACEMENT PROJECT

DETAILS SHEET

APN Number	Job Number	Scale	N/A	N/A	Sheet 6 Of 6
000-000-000	17-002	Horz.		Vert.	